

Exploring Iran

The Photography of
Erich F. Schmidt, 1930–1940



Ayşe Gürsan-Salzman

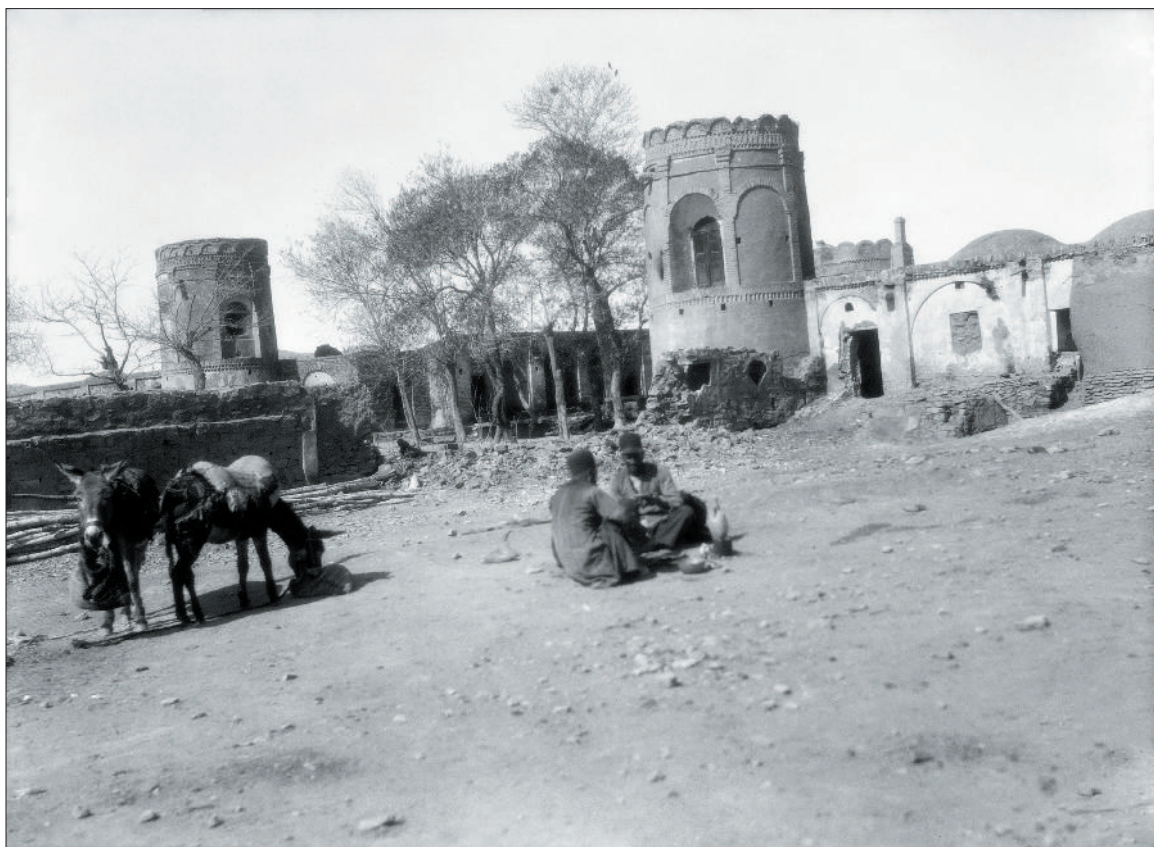


Figure 45 Village of Aliabad, between Teheran and Qumm. Note the ornamental brickwork on watch towers. Neg. #83389. March 1932.



Figure 46 “Masjed-i Jumah aiwan” (Friday Mosque reception hall); the building was begun in the 8th century, in the stalactite construction style. Neg. #83488. April 1932.

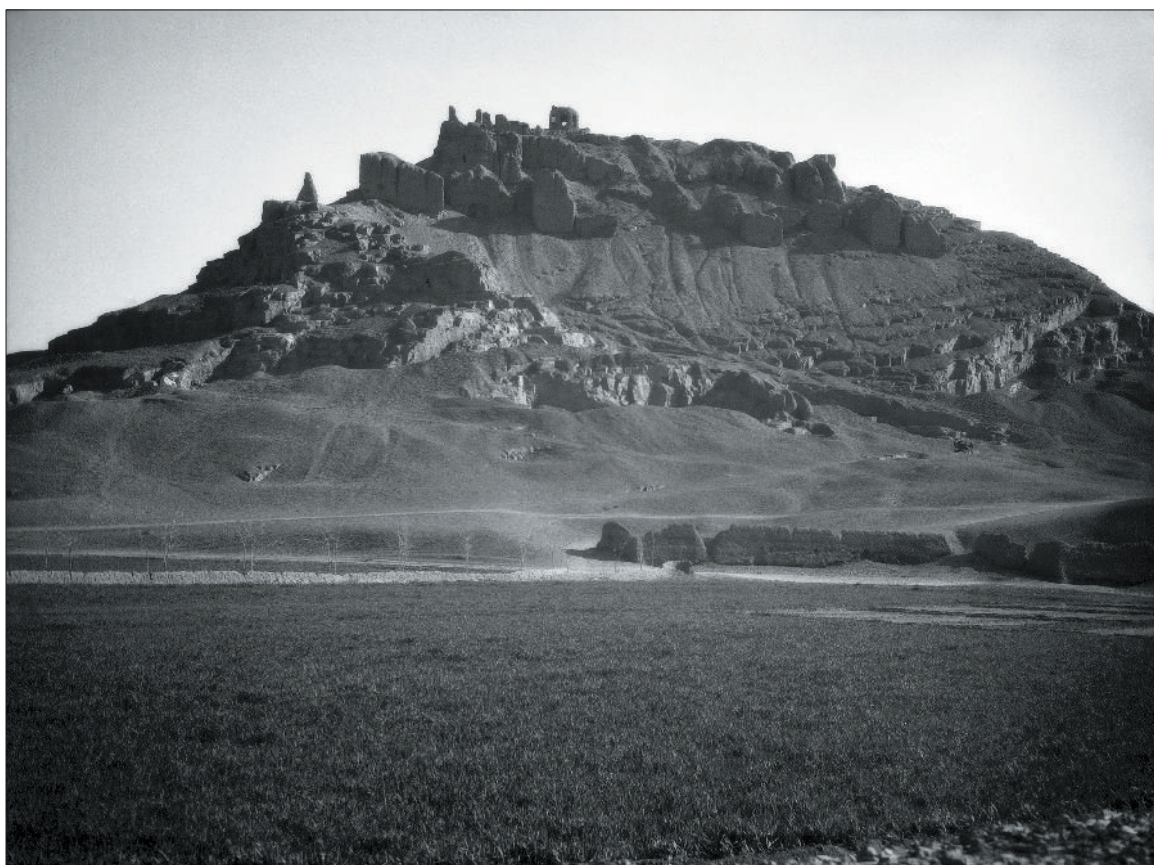


Figure 47 The “ateshgah” (place of fire), a Zoroastrian temple west of Isfahan.
Neg. #83476A. April 1932.



Figure 48 Tomb of Zobeidah, Baghdad. Neg. #101217. January-February 1931.



Figure 49 Views of Main Street in Ahvaz (c. 100 km south of Dizful), Iran. Neg. #83423. March 1932.



Figure 50 Hairpin curve blocked by trucks, Bushire-Shiraz. Neg. #83437. March 1932.



Figure 51 Find spot of storage pot P-8, as workmen pose near it, Fara. Neg. #101411. February 1932.



Figure 52 "Goofa" (a special boat) on the Tigris River. Neg. #101229. January 1931.



Figure 53 Native Arab children, Baghdad. Neg. #101232. January 1931.



Figure 54 Camel at rest, Damghan. Neg. #83378. July 1932.



Figure 55 Tepe Hissar, general view of mound beneath rays of the setting sun.
Neg. #82650. July 1931.



Figure 56 Two boys posing with their Pahlavi “kūlah” hats, Damghan. Neg. #82840. 1931.

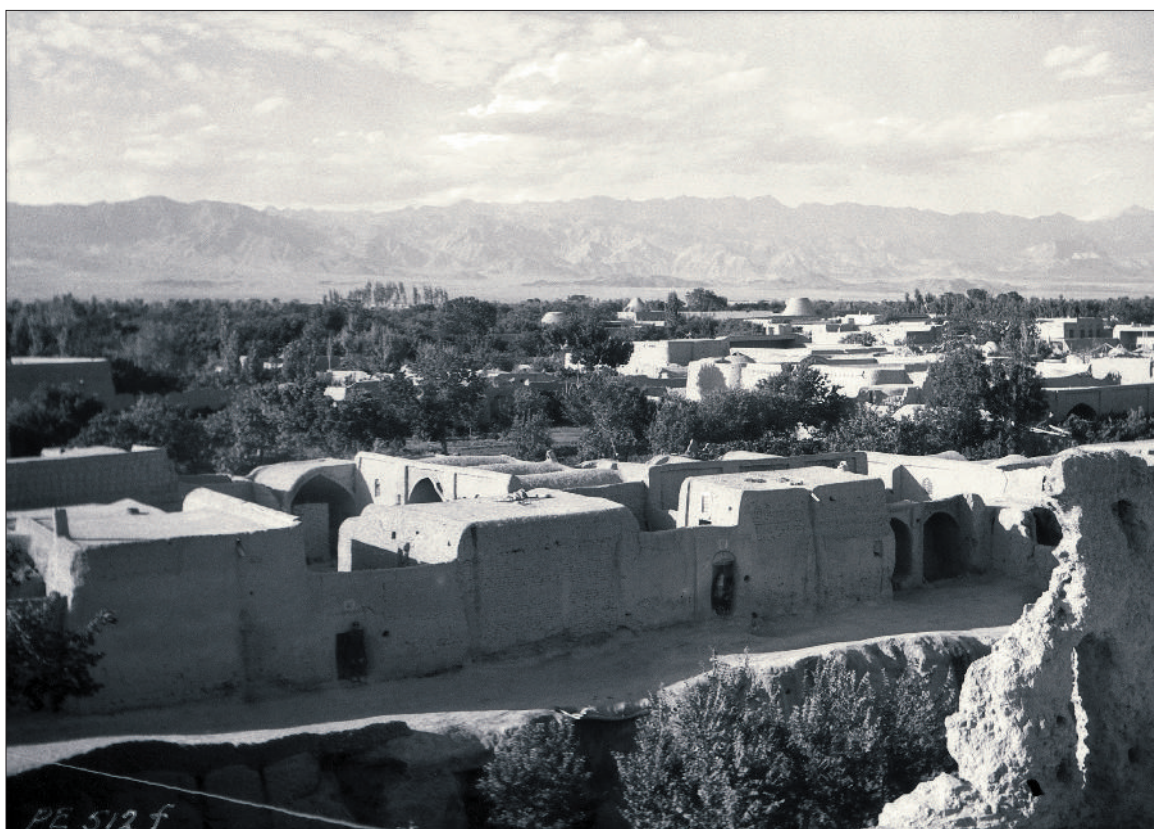


Figure 57 View of Damghan from citadel. Neg. #80960. June 1931.



Figure 58 Tepe Hissar, first visit to the mound. Neg. #80961. June 1931.



Figure 59 Street market in Baghdad. 1929.



Figure 60 Street café in Baghdad. 1929.



Figure 61 Tepe Hissar, on a survey trip. 1931.



Figure 62 Forest workers in Mazandaran province, southern shore of the Caspian Sea.



Figure 63 Village fortress, 62 km south of Khorramabad; to the left are black tents of nomads and a herd of goats near the village enclosure, Luristan. Neg. #83399. March 1932.



Figure 64 Cache of male figurines, duck figurine, and bowl in copper, c. 2500 BC, Tepe Hissar. Neg. #85302. September 1932.



Figure 65 Gold moufflons excavated from Treasure Hill, Tepe Hissar, dated to c. 2000 BC, created of thin sheet gold with seven pairs of perforations, probably sewn on garments. September 1932.



Figure 66 Stone weight with wide loop handle c.2500 BC, Tepe Hissar. Neg. #85154. August 1932.



Figure 67 Alabaster plate, c. 2500 BC, Tepe Hissar. 1932.



Figure 68 Alabaster column and disc, c. 2500 BC, Tepe Hissar. 1932.



Figure 69 Arab tribesmen waiting for employment, Fara. February 1931.



Figure 70 A beggar, near Damghan. 1932.



Figure 71 Copper signet ring with carved images of stylized palm tree flanked by animals, along with its impression, c. 1000-900 BC, Sorkh Dum-i-Luri excavations, Luristan. 1935.



Figure 72 Impression of cylinder seal of carved faience—two rampant winged bulls flanking a stylized palm tree, c. 1000-900 BC, Sorkh Dum-i-Luri excavations, Luristan. 1935.



Figure 73 Restored plaque of a female bust, a stucco from the Sasanian Palace, c. 4th century, Damghan. 1931.



Figure 74 Woman at the gate of a prosperous house. Note the mud-plastered high entrance, Damghan. Neg. #83972. 1932.



Figure 75a Convoy en route Teheran-Baghdad on snow-covered highway, near the court of a caravanserai. Winter 1932.



Figure 75b Digging snow-covered highway, near the court of a caravanserai. Winter 1932.



Figure 76 Goblet of baked clay, dark brown leopards on light grayish brown, c. 3500 BC, Tepe Hissar. Neg. #83206. February 1932.

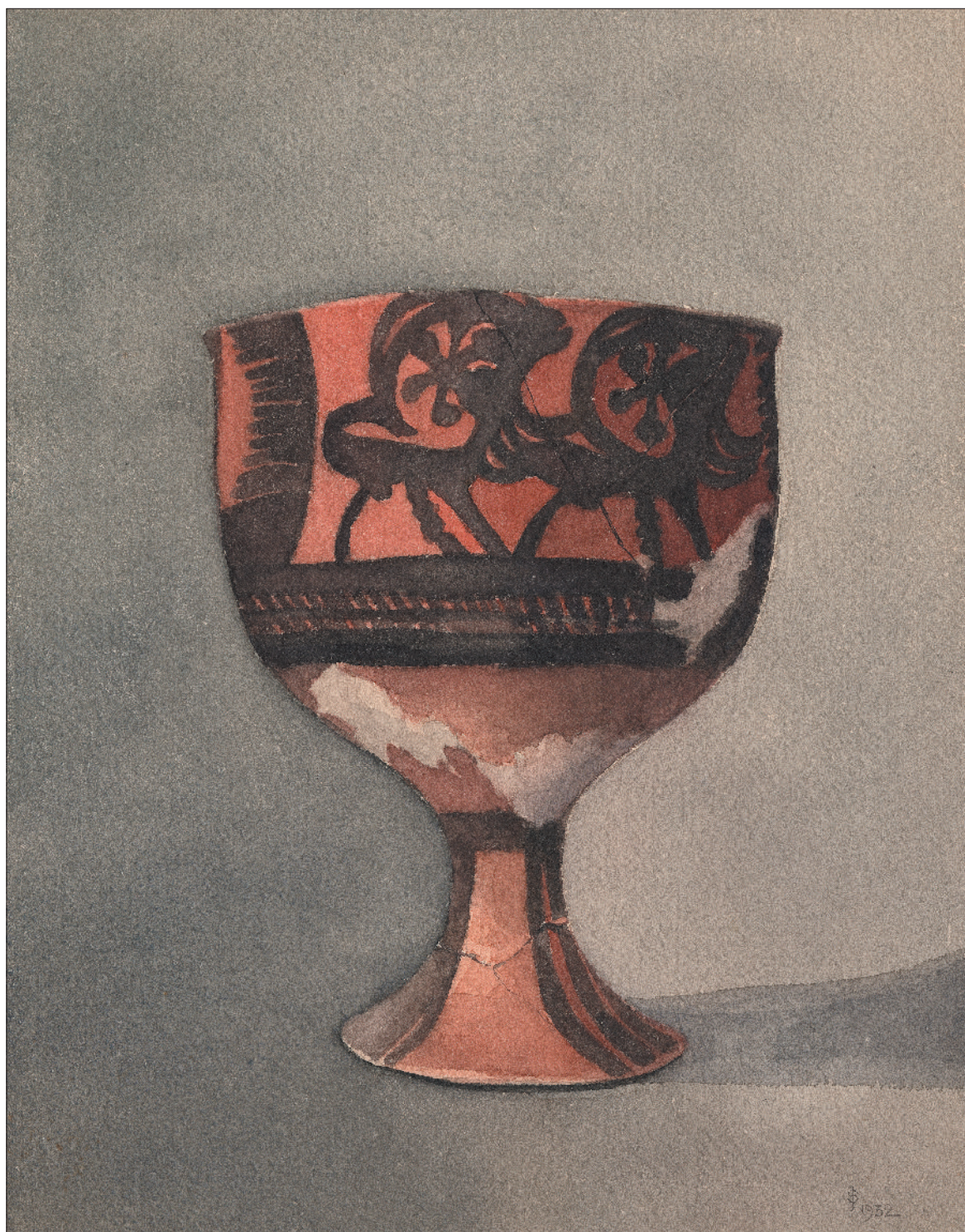


Figure 77 Goblet of baked clay, dark gray paint on reddish buff, with ibex and gazelle pattern, c. 3500 BC, Tepe Hissar. Neg. #83558. November 1931.



Figure 78 Alabaster hen figurine; feather and eyes are black-encrusted incisions, beak is a red-filled hole, c. 2500 BC, Tepe Hissar. Neg. #83226-28. October 1931.



Figure 79 Alabaster bear figurine; red-encrusted incisions on back and muzzle; eyes are black-encrusted concentric circles, c. 2500 BC, Tepe Hissar. Neg. #84902. October 1931.



Figure 80 Jewelry of semiprecious stones, including lapis lazuli, turquoise, carnelian, and shell, from the grave of the “little girl,” c. 2500 BC, Tepe Hissar. From an oil painting by Ivan Gerasimoff, 1932.

<div style="display: flex; justify-content: space-between; align-items: center;"> TO BE GIVEN TO THE PERSON NATURALIZED No. 4512611 </div>	
<div style="display: flex; justify-content: space-between; align-items: center;"> CERTIFICATE OF CITIZENSHIP </div>	
<p><i>Petition No.</i> <u>126704</u></p>	
<p>Personal description of holder as of date of naturalization: Age <u>41</u> years, sex <u>male</u>, color <u>white</u>, complexion <u>medium</u>, color of eyes <u>blue</u>, color of hair <u>lt. brown</u>, height <u>5</u> feet <u>6</u> inches, weight <u>140</u> pounds, visible distinctive marks <u>none</u></p>	
<p>Marital status <u>Widower</u> former nationalities <u>Germany</u></p>	
<p style="text-align: center;">I certify that the description above given is true, and that the photograph affixed hereto is a likeness of me.</p>	
<div style="display: flex; justify-content: center; align-items: center;"> ORIGINAL <div style="margin-left: 20px;"> <p style="font-size: 0.8em;">(Complete and true signature of holder)</p> </div> </div>	
<div style="text-align: center;"> <p>(SEC AFF)</p> <p style="font-size: 0.8em;">(THE SEAL OF THE COURT WILL BE IMPRESSED SO AS TO COVER A PORTION OF THE LOWER EDGE OF THE PHOTOGRAPH)</p> </div>	<p>UNITED STATES OF AMERICA ss: EASTERN DIST. OF PENNSYLVANIA</p> <p>Be it known that <u>ERICH FRIEDRICH SCHMIDT</u> here residing at <u>College Ave., & Coopertown Rd., Haverford, Pa.</u> having petitioned to be admitted a citizen of the United States of America, and at a term of the <u>District</u> Court of <u>The United States</u> <u>Philadelphia</u> held pursuant to law at <u>November 9th</u> <u>1938</u> the court having found that the petitioner intends to reside permanently in the United States had in all respects complied with the Naturalization Laws of the United States in such case applicable, and was entitled to be so admitted, the court thereupon ordered that the petitioner be admitted as a citizen of the United States of America.</p> <p>In testimony whereof the seal of the court is hereunto affixed this <u>9th</u> day of <u>November</u> in the year of our Lord nineteen hundred and <u>thirty-eight</u> and of our Independence the one hundred and <u>sixty-third</u></p> <div style="text-align: right; padding-top: 20px;"> <p><u>GEORGE BRODBECK,</u> Clerk of the <u>U.S. District</u> Court.</p> <p>By <u>J. J. [Signature]</u> Deputy Clerk.</p> </div>
<div style="display: flex; justify-content: space-between; align-items: center;"> DEPARTMENT OF LABOR </div>	

Figure 81 Erich F. Schmidt's U.S. citizenship document.



Figure 82 Schmidt enjoying a game of chess with friends in his apartment in Chicago, early 1940s. "I was told that at that time it was furnished mostly with expedition boxes covered with fabulous oriental rugs and pillows. It certainly looks that way. I have that beautiful chess table in my home now" (Erika Schmidt, pers. comm., October 2006).



Figure 83 Schmidt entertaining guests in his Chicago apartment, c.1940.



Figure 84 Schmidt with his second wife, Lura Florence NeVoy Strawn, mid-1940s.

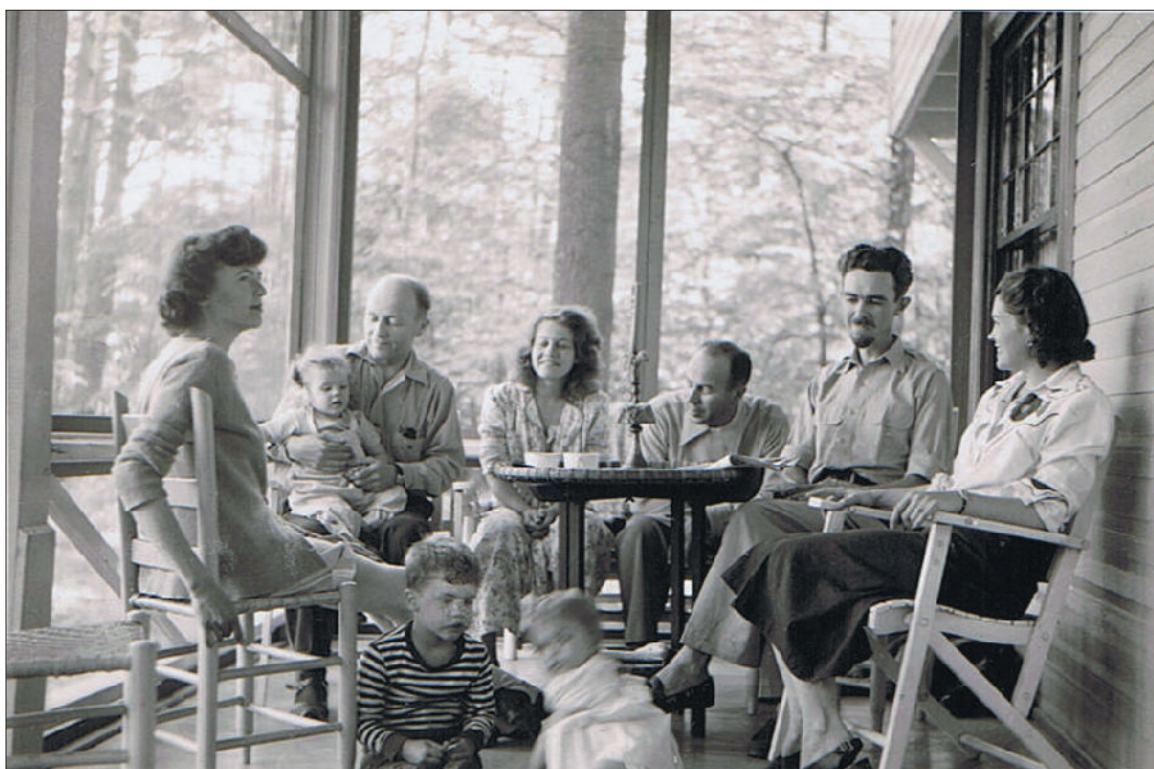


Figure 85 Family and friends at Schmidt home, Lakeside, MI, 1948. From left: Lura Schmidt, Erich Schmidt, and friends. Sitting in front are the Schmidt children, Richard and Erika. "I believe we rented that cottage for a few summers" (Erika Schmidt, pers. comm., October 2006).



Figure 86 Erich and Lura Schmidt at home.



Figure 87 Erika Schmidt visiting Persepolis in 1998.

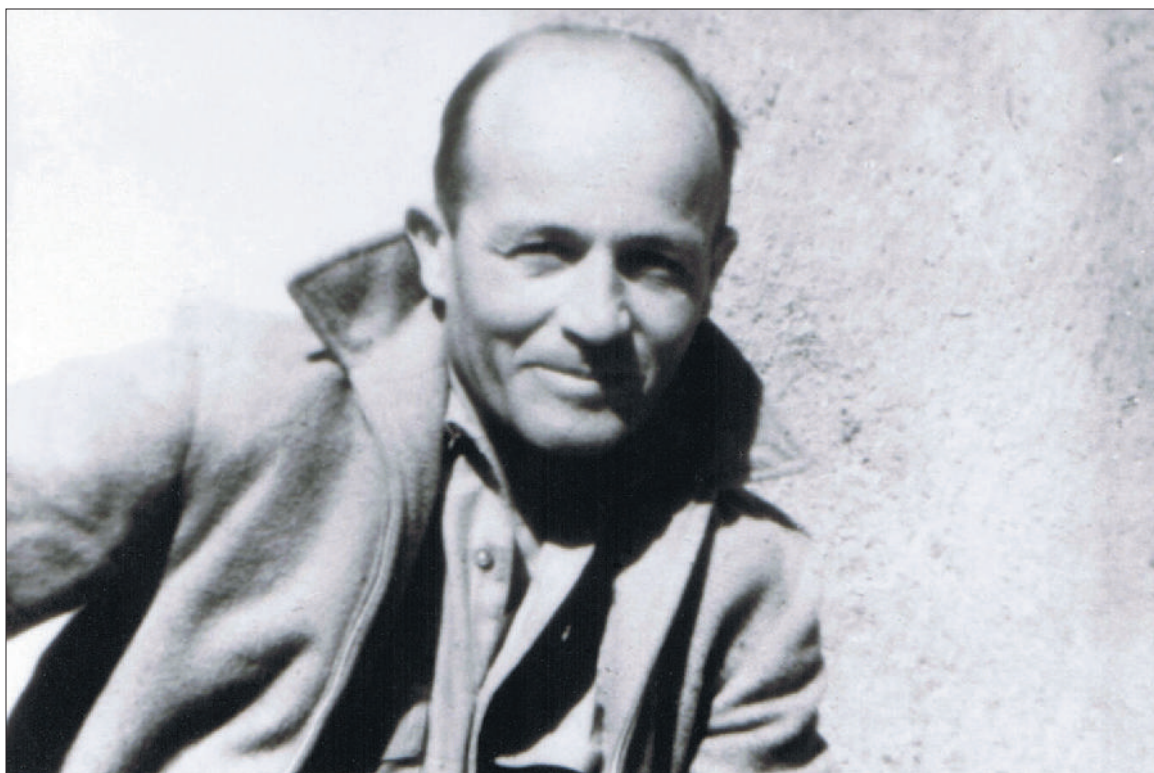


Figure 88 Erich Schmidt, c. 1950.